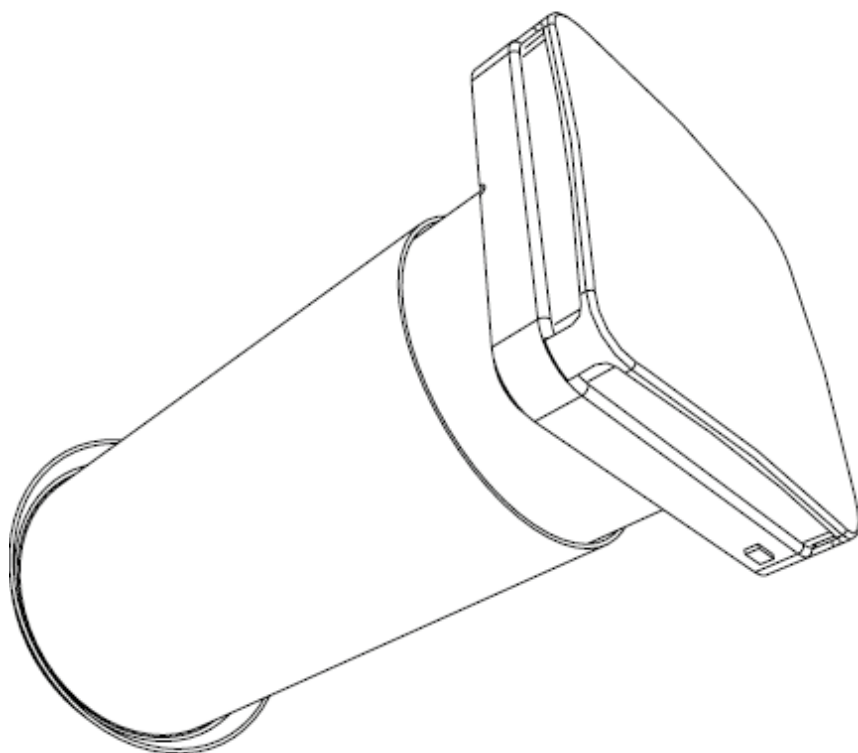


TECHNICAL DATA SHEET



UNIT	ENERGETIC CLASS
AURA 1 & 2	A



AURA PRO



VENTILATION UNIT WITH HEAT RECOVERY FOR RESIDENTIAL BUILDINGS



AURA PRO

It is a Decentralized Mechanical Ventilation Unit with heat recovery that does not require the installation of an air distribution system with ducts and diffusers. The unit uses a regenerative heat exchanger (ceramic exchanger). Two sizes are available:

AURA PRO 1 with a nominal airflow of MAX 24 m³/h

AURA PRO 2 with a nominal airflow of MAX 50 m³/h

AURA PRO

- Power supply: 230 V - 1 phase - 50 Hz (onboard)
- Standard remote control

FAN function

- Speed settings: MAX / INTERMEDIATE / MIN / OFF
- CYCLE function (independent of speed)
- Manual mode:
 - IN = air intake
 - OUT = air extraction
- Automatic mode: AUTO

Additional features

- External temperature sensor to prevent intake of excessively cold air T and RH check every 12 hours to optimize cycle duration (35 ÷ 200 sec.) and ensure maximum efficiency
- Humidity/VOC sensor: switches to MAX speed based on humidity or VOC detection
- Light sensor: switches to MIN speed when the light is turned off
- Night mode (SLEEP): operates at minimum airflow for maintenance (e.g., during prolonged absence)
- Configurable airflow direction

- COMPLETE

All AURA PRO units come with all necessary components for operation and are ready to use.

- SIMPLIFIED INSTALLATION

The mounting kit includes all components, making installation quick and easy in both new and existing buildings.

- VENTILATION

Brushless axial fan with Erp-2015 electronic motor. High efficiency and low noise levels.

- FILTRATION

Coarse 45% filter (formerly G3) with low pressure drop, easily removable for maintenance from the front side of the unit.

- STRUCTURE

Antistatic ABS plastics with UV protection.

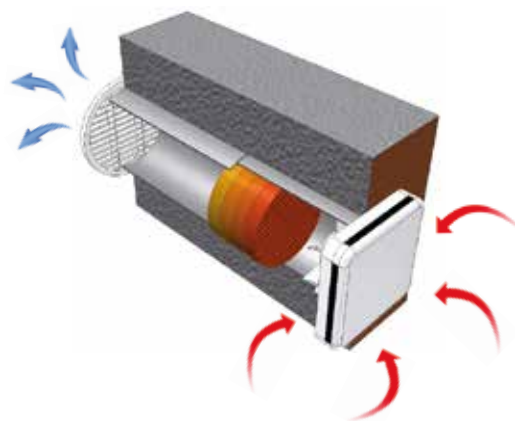
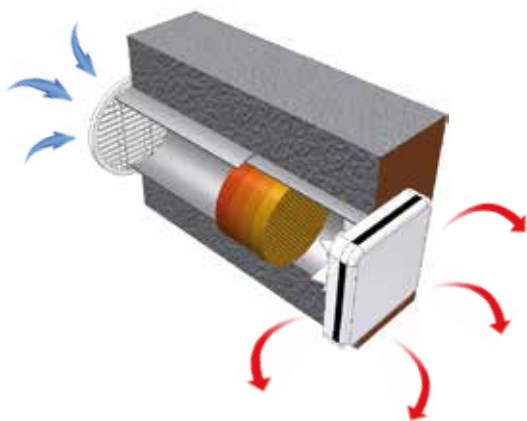
- HEAT EXCHANGER

Regenerative alternating flow heat exchanger. Made of ceramic, ensuring high heat exchange efficiency and low pressure losses.

- FOLDABLE EXTERNAL GRILLE (standard)

Standard: Foldable Ø 190 mm external grille, easy to install from the interior (no need for an external structure).

Optional: Design external grille with improved weather resistance, installable from the exterior.





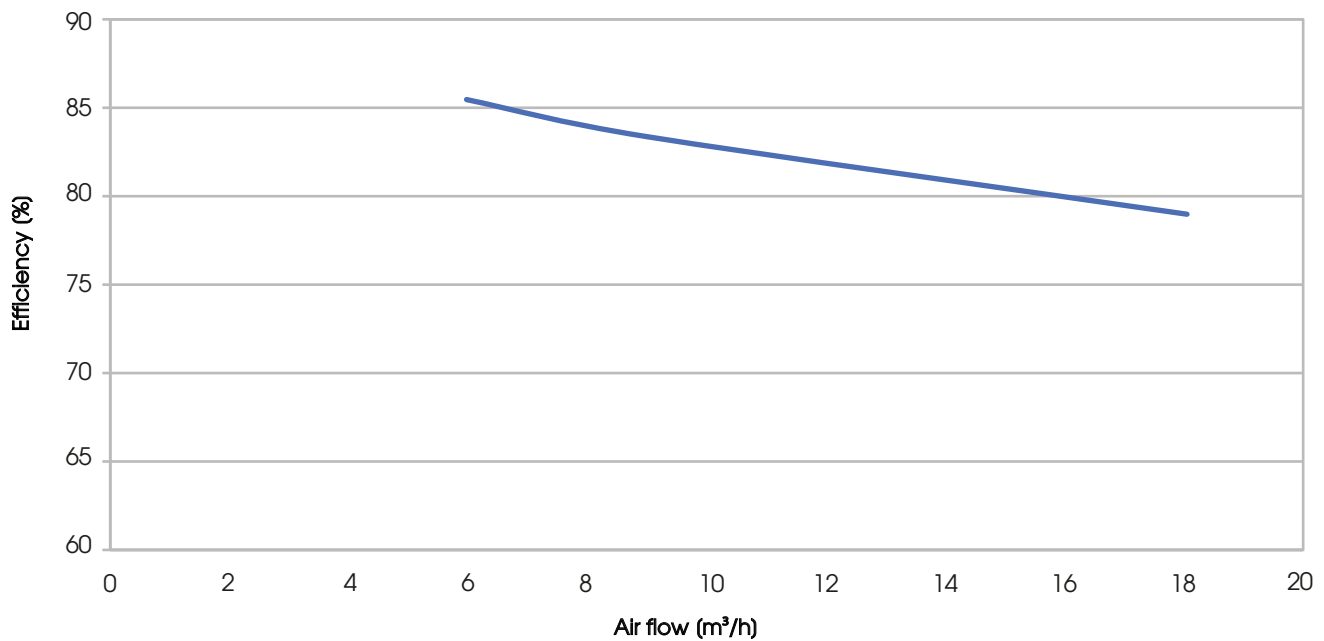
AURA PRO 1

SENSIBLE HEAT RECOVERY EFFICIENCY

Values refer to the following conditions (UNI EN 13141-7): T_{bs} outdoor air 7°C; RH outdoor 72%; T_{bs} indoor 20°C; RH indoor 28%.

N.B. - Efficiency values of the airflow 'in the cycle,' meaning they take into account the fan stop time for reversing the airflow direction."

Speed (nr.)	1	2	3
Air flow (m ³ /h)	6	9	18
Efficiency (%)	85,5	83,4	79



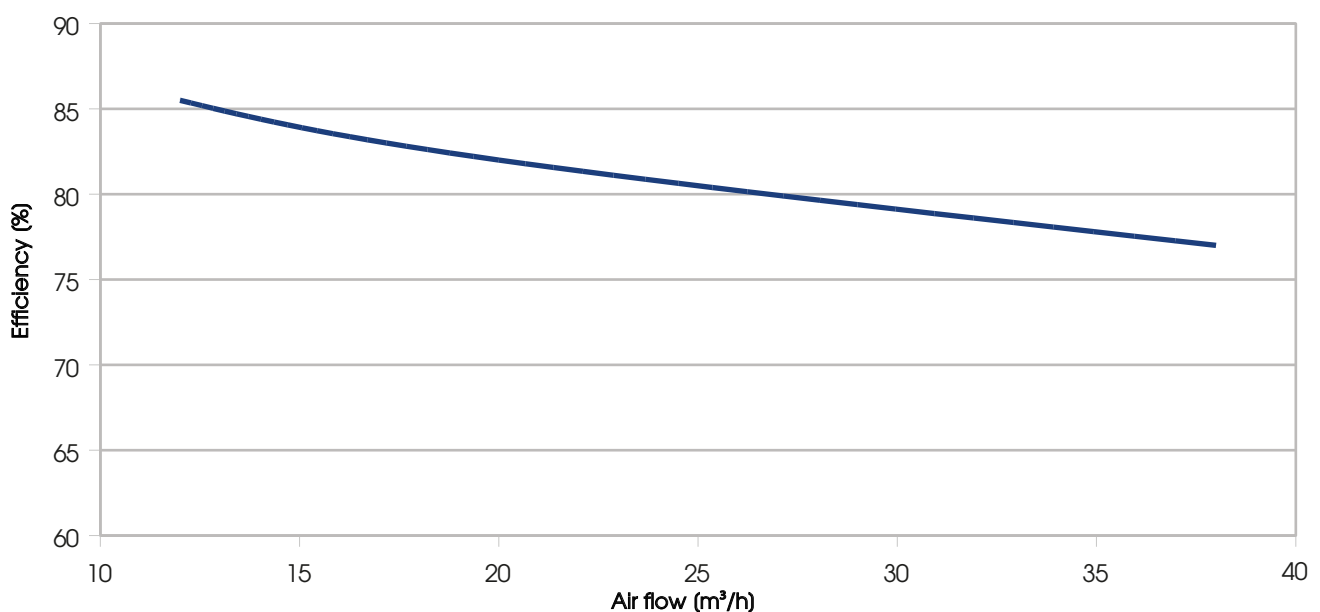
AURA PRO 2

SENSIBLE HEAT RECOVERY EFFICIENCY

Values refer to the following conditions (UNI EN 13141-7): T_{bs} outdoor air 7°C; RH outdoor 72%; T_{bs} indoor 20°C; RH indoor 28%.

N.B. - Efficiency values of the airflow 'in the cycle,' meaning they take into account the fan stop time for reversing the airflow direction."

Speed (nr.)	1	2	3
Air flow(m ³ /h)	12	20	38
Efficiency (%)	85,5	82	77





TECHNICAL DATA

FANS

DC Brushless Axial Fans (data referring to UNI EN 13141-8 standard)

UNIT	SPEED NUMBER	NOMINAL AIRFLOW (m³/h)	CICLE AIR FLOW (m³/h)	AIR FLOW SPEED (m³/h)	AIR FLOW CICLE SPEED (m³/h)	NIGHTTIME AIR FLOW* (m³/h)
AURA PRO 1	3	24	18	24/12/8	18/9/6	5
AURA PRO 2	3	50	38	50/25/15	38/20/12	10

REGENERATIVE HEAT EXCHANGER

Heat exchanger (Data according to the UNI EN 13141-8 standard)

Indoor temperature 20°C - Indoor humidity 28% - Outdoor temperature 7°C - Outdoor humidity 72%

	AURA PRO 1	AURA PRO 2
RECOVERY EFFICIENCY (%)	79	77

FILTERS

	AURA PRO 1	AURA PRO 2
FILTRATION CLASS	G3	G3

Acoustic data (at different speeds)

(Data according to the UNI EN 3741 standard)

	AURA PRO 1	AURA PRO 2
SOUND POWER Lw dB(A)	32/26/18	44/38/29
SOUND PRESSURE a 1 mt dB(A)	28/26/23	39/37/34

Noise tested inside the room

ELECTRICLA DATAS

Supply voltage 230/1/50 Hz

	AURA PRO 1	AURA PRO 2
POWER CONSUMPTION (W)	6,6	6,6
POWER CONSUMPTION (A)	0.0287	0.0287
IP PROTECTION RATING	X4	X4

DIMENSIONS

	AURA PRO 1	AURA PRO 22
INTERNAL MASK (mm)	180x180	180x180
PVC PIPE DIAMETER (MM)	107	160
PIPE DEPTH (mm)	Min 240/ Max 540	Min 240/ Max 540

SOUND ATTENUATION

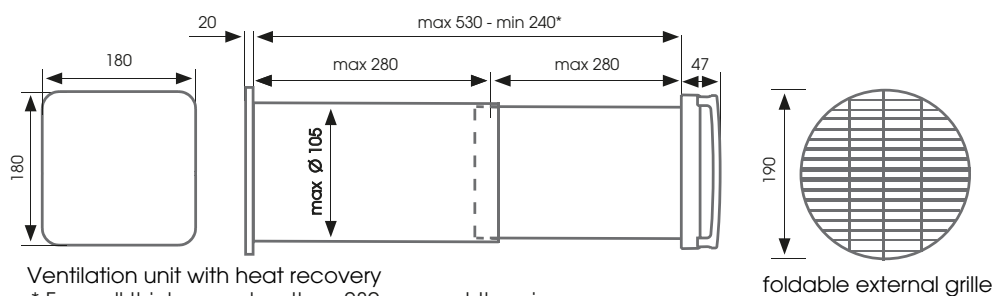
SOUND ATTENUATION (insertion loss) relative to external noise							
Frequency(Hz)	125	250	500	1000	2000	4000	8000
Attenuation(dB)	5,6	3,3	4,9	8,1	9,9	7,1	11,6



ERP ECODESIGN AURA PRO 1

UNIT		CONTROL MANUAL AURA + UR REGULATOR
	COLD	-78,6
SEC (kWh/m ² .a)	AVERAGE	-41,3
	WARM	-17,3
SEC CLASS		A
DECLARED TYPE		UVR - bidirectional
TYPE OF INSTALLED DRIVE		speed controller
HEAT RECOVERY SYSTEM		Regenerative
THERMAL EFFICIENCY OF HEAT RECOVERY (%)		79
MAXIMUM FLOW RATE (M ³ /S)		0,0050
ELECTRICAL POWER CONSUMPTION AT MAXIMUM FLOW RATE (W)		2
SOUND POWER LEVEL (LWA)		39
REFERENCE FLOW RATE (M ³ /S)		0,0050
REFERENCE PRESSURE (PA)		0
SPI (W/M ³ /H)		0,222
CLTR CONTROL FACTOR		0,65
MAXIMUM DECLARED PERCENTAGES OF LEAKAGE (%)		N.A
MIXING RATE NON-DUCT UNIT (%)		5
POSITION AND DESCRIPTION OF THE SIGNAL RELATED TO THE FILTER		displayed on the remote control and in the instruction manual
INTERNET ADDRESS DISASSEMBLY INSTRUCTIONS		
AIRFLOW SENSITIVITY (%)		N.A
EXTERNAL AIR TIGHTNESS (M ³ /H)		2
AEC - ANNUAL ELECTRICITY CONSUMPTION (KWH/A)		3,39
AHS - ANNUAL HEATING SAVINGS (KWH/A)		8736 (COLD)
		4465 (AVERAGE)
		2019 (WARM)

DIMENSIONS AND FUNCTIONAL SPACES AURA PRO 1



Front dimension 180x180 mm

hole diameter 105 mm

Length 230/540 mm

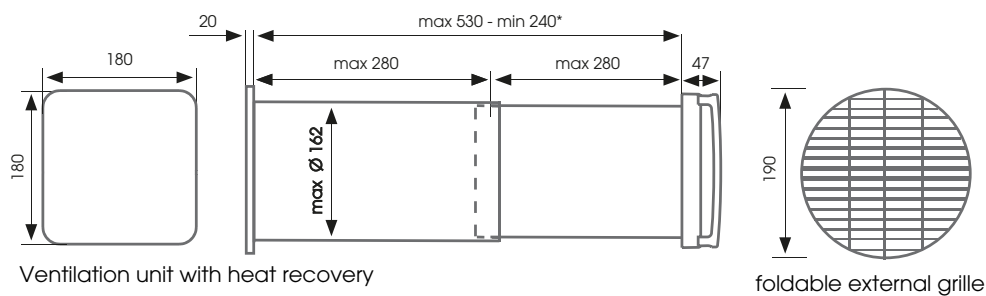
Weight 3,8 kg



ERP ECODESIGN AURA PRO 2

UNIT		CONTROL MANUAL AURA + UR REGULATOR
SEC (kWh/m ² .a)	COLD	-78,8
	AVERAGE	-41,8
	WARM	-18,1
SEC CLASS		A
DECLARED TYPE		UVR - bidirectional
TYPE OF INSTALLED DRIVE		speed controller
HEAT RECOVERY SYSTEM		Regenerative
THERMAL EFFICIENCY OF HEAT RECOVERY (%)		77
MAXIMUM FLOW RATE (M ³ /S)		0,0105
ELECTRICAL POWER CONSUMPTION AT MAXIMUM FLOW RATE (W)		2,8
SOUND POWER LEVEL (LWA)		44
REFERENCE FLOW RATE (M ³ /S)		0,0105
REFERENCE PRESSURE (PA)		0
SPI (W/M ³ /H)		0,147
CLTR CONTROL FACTOR		0,65
MAXIMUM DECLARED PERCENTAGES OF LEAKAGE (%)		N.A
MIXING RATE NON-DUCT UNIT (%)		4
POSITION AND DESCRIPTION OF THE SIGNAL RELATED TO THE FILTER		displayed on the remote control and in the instruction manual
INTERNET ADDRESS DISASSEMBLY INSTRUCTIONS		
AIRFLOW SENSITIVITY (%)		N.A
EXTERNAL AIR TIGHTNESS (M ³ /H)		3
AEC - ANNUAL ELECTRICITY CONSUMPTION (KWH/A)		2,40
		8654 (COLD)
		4424 (AVERAGE)
AHS - ANNUAL HEATING SAVINGS (KWH/A)		2000 (WARM)

DIMENSIONS AND FUNCTIONAL SPACES AURA PRO 2



Front dimension 180x180 mm

hole diameter 162 mm

Length 230/540 mm

Weight 3,8 kg



AURA PRO installations with longer pipe length

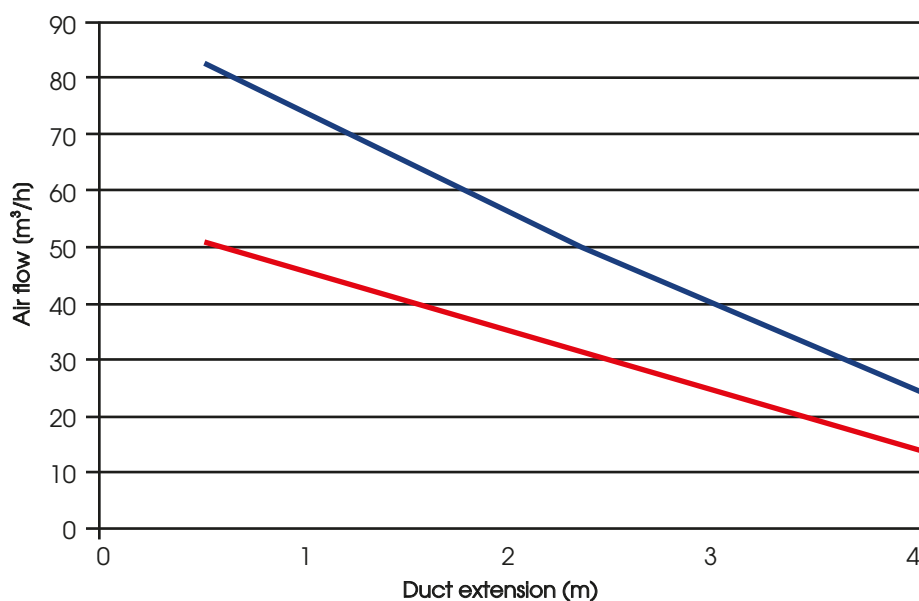
If necessary, a longer pipe (same diameter) can be used compared to the standard (max. 540 mm); this results in a reduction in performance: the air circuit will have higher pressure losses, and the fan will operate at a lower flow rate to compensate for them.

Regarding the AURA PRO 2 size (nominal flow rate 50 m³/h), the graph shows the reduction in flow rate (y-axis) as the length of the duct increases (extension from 0.5 to 4 meters, x-axis); the test was conducted with ducting WITHOUT bends, meaning without localized pressure losses.

m ³ /h	mt
13,90	4,0
24,16	3,0
35,60	2,0
50,86	0,5

"NOTE: an application with an extension over 4 meters is not recommended.

The RED curve refers to the STANDARD machine; the BLUE curve refers to a unit with ENHANCED PERFORMANCE that we can provide in case of a minimum batch (about 20 units, with delivery NOT from stock).





ACCESSORIES AND SPARE PARTS



Spare ceramic regenerator



WALL MOUNTING TEMPLATE

Template for wall mounting of the unit with quick disassembly. The template can be useful in situations where, for unit inspection, it is preferable not to remove the wall mounting screws but to disassemble the unit using convenient fastening knobs. It is supplied as a kit with mounting screws and accessories.



AESTHETIC EXTERNAL GRILLE

Finishing grille made of white plastic. Rear insulation for anti-condensation function.



PLASTIC PARTS KIT

Complete kit of plastic parts for replacement.



G3 REPLACEMENT FILTER

Replacement filter in G3 class.



ANGLE EXIT KIT

It is possible to install the unit with an angular airflow direction and exit close to the window frame (e.g., the reveal between the window and the external wall); the exhaust grille is concealed.

The kit consists of:

Round/rectangular connector + 1-meter length tube

End connector with aluminum grille

(rain deflector blades and protective mesh)

Available for AURA PRO 1 and AURA PRO 2, analog and electronic versions; a dedicated technical datasheet is available upon request.



UNIT PREPARATION KIT - PVC version - Insulated version

During construction, it is possible to position the preparation kit (PVC pipe or insulated) and complete the AURA PRO unit supply (full unit) at a later stage.

Complete with closure accessory.

Note: for the small size, it is necessary to insert the additional insulation between the PVC (AURA PRO 1) and the PPE pipe.

3IBM0E000ADL: PVC pipe L = 500 mm - AURA PRO 1 - Preparation (OUTSIDE diameter 105 mm)

3IBM0E100ADL: Insulated pipe L = 500 mm - AURA PRO 1 - Preparation (OUTSIDE diameter 155 mm)

3IAM0E000ADL: PVC pipe L = 500 mm - AURA PRO 2 - Preparation (OUTSIDE diameter 165 mm)

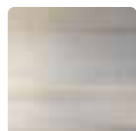
CADCONPPE036: Insulated pipe L = 1000 mm - AURA PRO 2 - Preparation (OUTSIDE diameter 190 mm)



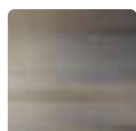
"COVER FINISHES

The front panels are available in various versions (metal, wood, painted or paintable) to customize the AURA PRO heat recovery unit and integrate it into different living environments. The front panels are supplied complete with mounting screws for easy and intuitive replacement of the standard front panel. Front dimension 230x230 mm.

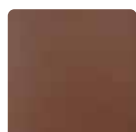
NATURAL METAL FINISHES



Mirror finish stainless steel

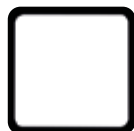


Satin finish stainless steel



Corten

PAINTED METAL FINISHES



White



Black

WOOD FINISHES



Wenge oak

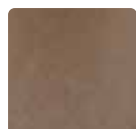


White oak



Natural oak

MDF



MDF, paintable by the customer

Dear Customer,

Thank you for your attention to the UTEK product,
designed and manufactured to ensure real values
for the user: Quality, Safety, and Energy Savings.



Made in Italy

**AZIENDA CON SISTEMA
DI GESTIONE QUALITÀ
CERTIFICATO DA DNV GL**
ISO 9001

**AZIENDA CON
SISTEMA DI GESTIONE
AMBIENTALE CERTIFICATO
DA DNV**
ISO 14001



the Dealer

AURA_PRO_2025_0_IT



VENTILATION UNIT WITH HEAT RECOVERY FOR RESIDENTIAL BUILDINGS