



Brochure 2026

VMC Product



CLAUTEK

For over thirty years, we have been committed to the design and production of advanced solutions for ventilation, air treatment, and air conditioning with heat recovery, serving both the residential and tertiary sectors. With a team of more than 200 professionals, we operate across three facilities covering a total area of over 17,500 square meters, equipped with technologically advanced machinery to ensure high-quality products.

Our commitment to excellence is certified by the ISO 9001 quality management system, obtained in 2006, which attests to the reliability and precision of our production processes. At the same time, our focus on health and the environment is a key priority (ISO 14000 certifications): every solution we develop is designed to optimize energy efficiency and reduce environmental impact.

Quality, Innovation, and Sustainability: our key principles for a better future.

VMC: what it is and how it works

Mechanical Controlled Ventilation (MCV) is an innovative technology designed to solve ventilation issues in low-energy buildings, such as those with airtight envelopes, high thermal insulation, and double or triple-glazed windows. Insufficient ventilation can lead to excess humidity, creating favorable conditions for the growth of mold, fungi, and bacteria.

On average, we spend about 90% of our time indoors, where the air we breathe is often contaminated by both internal and external pollutants. Opening windows in climate-controlled environments is ineffective and counterproductive, as it causes energy loss and allows noise and outdoor pollution to enter.

Mechanical Controlled Ventilation (MCV), on the other hand, is a forced air exchange system that operates 24 hours a day, 365 days a year, eliminating the need to manually open windows. The main advantages are:

- .Optimal control of air exchange
- .Minimized energy waste
- .Improved air quality thanks to the filtration system

In a home equipped with a dual-flow heat recovery unit, the system operates with high efficiency: stale air from service areas (kitchen, bathrooms, laundry room) is extracted, filtered, and passed through a heat exchanger before being expelled outside. At the same time, fresh air from outside is drawn in, filtered, and treated in the exchanger (heated, cooled, or dehumidified depending on the season) before being supplied to the main living areas (bedrooms, living room, study). UTEK units ensure a high standard of energy efficiency. They fully meet certification requirements for high energy-class buildings, providing maximum comfort without compromising the environment.

Key benefits of UTEK MCV:

- .Improved indoor air quality
- .Energy savings and reduced consumption
- .Continuous air filtration for a healthy and safe environment



Goal: energy savings

The construction sector is responsible for approximately 40% of total global energy consumption, a significant share that highlights the importance of effective measures to reduce consumption and environmental impact. The European Directives 2002/91/EC (EPBD – Energy Performance of Buildings Directive) and 2010/31/EU (EPBD) establish minimum requirements for the construction of new buildings, as well as for the renovation and upgrading of existing ones, with the aim of promoting energy efficiency and sustainability.

Nearly Zero Energy Buildings (nZEB)

The adoption of Nearly Zero Energy Buildings (nZEB) has become a widely established standard in building design. As of January 1, 2021, new private buildings—and since January 1, 2018, public buildings—must comply with high energy efficiency criteria. These passive buildings cover most of their energy needs (heating, cooling, domestic hot water, ventilation, and lighting) through minimal energy consumption, without relying on conventional systems, instead leveraging renewable energy sources.

Regulations and Technology for Sustainable Buildings

Continuously evolving European regulations, such as EU Regulation No. 1253/2014 (EcoDesign) and EU Regulation No. 1254/2014 concerning the energy classification of residential ventilation units, are driving the adoption of increasingly efficient and innovative technologies. New standards require low-energy-consumption devices capable of optimizing efficiency and reducing operating costs.

A key factor in improving energy efficiency is the advanced management of heat recovery systems. The use of air quality sensors and programmable time schedules allows optimization of unit operation, enhancing indoor air quality while further reducing operating costs—achieving the perfect balance between comfort, efficiency, and sustainability.

Key advantages:

- .Compliance with European and local regulations
- .Reduction in energy consumption and environmental impact
- .Optimization of ventilation and heat recovery systems
- .Improved air quality and indoor comfort

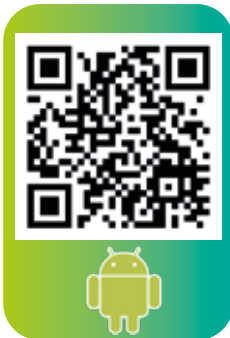
With the evolution of regulations and the adoption of advanced technological solutions, mechanical controlled ventilation (MCV) systems and heat recovery units are becoming essential elements for constructing buildings that are not only efficient but also sustainable, capable of meeting the future challenges of the construction sector.

Air Touch

NEW

NEW

Control the air with a tap.
Discover the new CLAUTEK App



Managing your ventilation system has never been easier. With the new CLAUTEK App, designed to work in synergy with EVO LIGHT BMS, EVO-PH IP, and EVO-D PH IP RS485 controls, you have full control of your system directly from your smartphone with Air Touch.

■ **Smart and intuitive**

Adjust fan speeds, set personalized schedules, and monitor system status in real time—all through a simple and clear interface.

■ **Always one step ahead**

In case of anomalies such as clogged filters or system alarms, the app displays alerts directly on the main screen, allowing you to take immediate action with no surprises.

■ **Advanced control, total convenience**

Forget the plant room: with CLAUTEK, you can manage everything comfortably from your sofa. It's technology that adapts to your lifestyle.

■ **Efficiency and comfort under control**

More efficiency, more reliability, better air quality—all in the palm of your hand.

Our Range



Residential

da pag. 6 a pag. 12



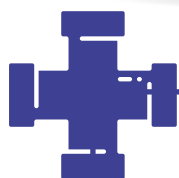
Industrial

da pag. 12 a pag. 14



**Air conditioning
and dehumidification**

pag. 15



Distribution

pag. 16



Filtration

pag. 16



Our PPE BLACK unit



Heat Recovery Ventilation Unit for Residential Buildings (HRV)

Compliant with EU Regulations No. 1253/2014 (EcoDesign) and 1254/2014 (Energy Labelling)

BREVA MICRO-FLAT

High-Efficiency Heat Recovery Ventilation (HRV) Unit

UNIT ENCLOSURE

- Housing made of PPE, weight 9 kg

CONFIGURATION AND INSTALLATION

- Horizontal: ceiling void or floor installation
- **Mirrored version available on request**

HEAT EXCHANGER

- Counterflow, high-efficiency, made of PP
- **Enthalpy heat exchanger available on request**

RANGE

- EC motors, with an air flow of 110 m³/h

ENERGETIC CLASS

- MICRO-FLAT: **A**



BREVA-H & BREVA-V

High-Efficiency Heat Recovery Ventilation (HRV) Unit

UNIT ENCLOSURE

- Housing made of PPE, weight 15 kg (BREVA-H) 20 kg (BREVA-V)

CONFIGURATION AND INSTALLATION

- BREVA-H: horizontal, ceiling void or floor installation
- BREVA-V: vertical, wall-mounted
- **Mirrored version available on request (BREVA-H only)**

HEAT EXCHANGER

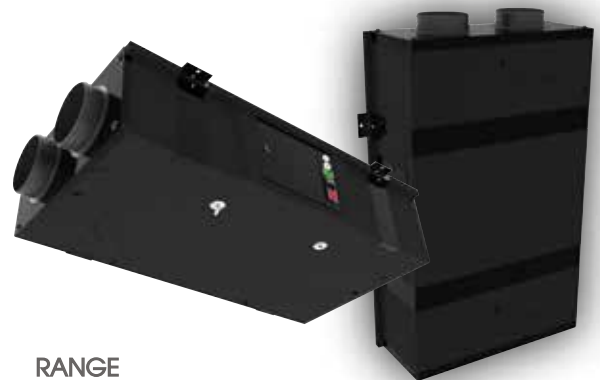
- Counterflow, high-efficiency, made of PP
- Automatic by-pass
- **Enthalpy heat exchanger available on request**

RANGE

- BREVA-H: airflow 218 m³/h
- BREVA-V: airflow 149 m³/h (BREVA-V 1) and 279 m³/h (BREVA-V 2)

ENERGETIC CLASS (with EVO-PH):

- BREVA-H : **A**
- BREVA-V 1 and 2 : **A**



BREVA-TOP

High-Efficiency Heat Recovery Ventilation (HRV) Unit

UNIT ENCLOSURE

- Housing made of PPE, weight 22kg

CONFIGURATION AND INSTALLATION

- BREVA-TOP : vertical, wall-mounted
- **Mirrored version available on request**

HEAT EXCHANGER

- Counterflow, high-efficiency, made of aluminium
- Automatic by-pass
- **Enthalpy heat exchanger available on request**

RANGE

- BREVA-TOP: airflow 267 m³/h

ENERGETIC CLASS (with EVO-PH):

- BREVA-TOP: **B**





BREVA-TOP MINI

High-Efficiency Heat Recovery Ventilation (HRV) Unit

UNIT ENCLOSURE

- Housing in PPE, front panel in grey plastic-coated sheet metal, weight 20 kg

CONFIGURATION AND INSTALLATION

- Vertical, wall-mounted
- **Mirrored version available on request**

HEAT EXCHANGER

- Counterflow, high-efficiency, made of aluminium
- Partial by-pass
- **Enthalpy heat exchanger available on request**

RANGE

- BREVA-TOP MINI: airflow 200 m³/h

ENERGETIC CLASS (with EVO-PH):

- BREVA-TOP MINI : **A**

Recessed frames

BREVA-V frame



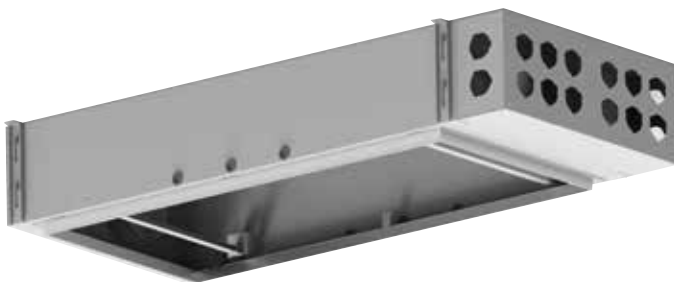
Recessed wall frame for BREVA-V 1 and BREVA-V 2 units

Made of Zinc-Magnesium, the frame consists of a housing for the unit, a depth-adjustable frame, a front panel with a tilt opening, and mechanical safety locks. At the bottom, the housing integrates two plenums for air supply and extraction, each with 8 provisions for TIVAN connections, allowing direct attachment of flexible ducts. Two adjustable brackets provide floor support, facilitating on-site installation, horizontal positioning, and secure fixing during masonry work.

The interior of the housing is fully insulated with closed-cell expanded polyethylene, ensuring effective thermal and acoustic insulation. The frame and front panel can be painted for optimal aesthetic integration into the environment.

Optional accessory: top plenum complete with air supply and exhaust grilles (Code 0MAP000000VB)

BREVA-H frame



Recessed frame made of Zinc-Magnesium, designed for ceiling installation, specific for Breva H units

Constructed from Zinc-Magnesium, the frame includes a housing for the unit, a distribution plenum for connecting the supply and exhaust air ducts, and a plasterboard closure hatch with fixing clips. The distribution plenum features 16 provisions for TIVAN connections, evenly split between air supply and extraction. The housing must be fixed before the installation of the plasterboard using anchors. The distribution plenum is fully internally insulated with closed-cell expanded polyethylene, ensuring effective thermal and acoustic insulation. Once installation is complete, the plasterboard hatch can be finished and painted for optimal aesthetic integration.

**NEW
NEW**

New TIVAN distribution Plenum in ABS



Distribution Plenum – Ideal Solution for Rectangular Grille Installations

The Distribution Plenum is an ideal solution for installation in spaces with rectangular grilles. Made from high-quality ABS material, this plenum is designed for durability and long-term resistance, with particular attention to ease of installation and maintenance.

Key Features:

Provision for 5 connections:

- .Top position
- .Rear position
- .Side position
- .Compact dimensions, perfect for insertion in 85 mm cavities
- .Flanged design for easy rear mounting, which can be removed if front installation is required, providing versatility in any environment

Included Kit:

- .1 Quick connection for Ø 75/63 mm duct or, alternatively, Ø 90/76 mm duct
- .1 Flow regulator with rings for precise air distribution control
- .4 Closing caps for complete protection
- .1 Front protection cap in cardboard (easy to dispose of on site)

This solution is designed to provide fast and secure installation without compromising efficiency and reliability. Its modular design and connection options allow for broad versatility during both design and installation phases.

Supply/Return Air Grille

The Supply/Return Air Grille is designed to provide optimal air distribution within the room, thanks to its progressively sized perforations. This feature ensures more uniform and controlled airflow, enhancing both comfort and the efficiency of the ventilation system.

Key Features:

.Progressive Perforation:

The hole sizes are designed to ensure uniform air distribution, optimizing airflow and minimizing areas of high turbulence.

.Screw Mounting System:

The grille attaches to the plenum using screws, providing a secure and stable connection. The grille is depth-adjustable, easily adapting to walls with varying plasterboard thicknesses.

.Ease of Installation:

Thanks to the adjustable system, installation is quick and precise, avoiding difficulties or inaccuracies, even with different wall types.

.Standard Available Colors:

Matte white and matte black



NEW
NEW

Nuova distribuzione Tivan Plenum in PPE



Distribution Plenum in PPE with Provision for 6 Quick Connections for \varnothing 75/63 mm Ducts
It is possible to connect multiple plenums in series.

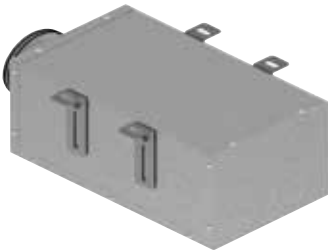
The kit includes:

- .6 caps with provisions for quick connections for \varnothing 75/63 mm and \varnothing 90/76 mm ducts (CADCONACC073 or CADCONACC077)
- .2 duct clamps
- .1 multiple connection \varnothing 160/125 mm
- .1 blind \varnothing 160 mm connection, which can be opened with a cutter if needed

New TIVAN distribution Metal plenum

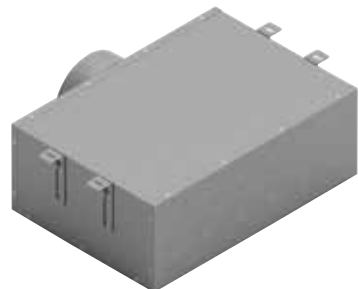
CADPLENUM031

- Main connection \varnothing 125 mm, designed for 12 connection points



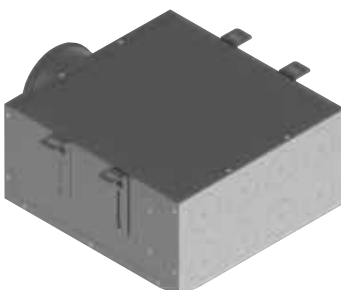
CADPLENUM033

- Main connection \varnothing 200 mm, designed for 32 connection points



CADPLENUM032

- Main connection \varnothing 160 mm, designed for 20 connection points



Our Zinc-Magnesium units



Heat Recovery Ventilation Unit for Residential Buildings (HRV)

Compliant with EU Regulations No. 1253/2014 (EcoDesign) and 1254/2014 (Energy Labelling)

FLAT & FLAT vertical *

High-Efficiency Heat Recovery Ventilation (HRV) Unit
- Plug 'n' Play version (electrical panel and controls pre-wired on the unit)

UNIT ENCLOSURE

- Self-supporting structure with polyurethane panels; unit interior and exterior in Zinc-Magnesium

CONFIGURATION AND INSTALLATION

- Horizontal: ceiling void or floor installation
- Vertical: wall-mounted
- **Mirrored version available on request**

HEAT EXCHANGER

- Counterflow, high-efficiency, aluminum
- Automatic full bypass
- **Enthalpy heat exchanger available on request**

RANGE

- FLAT: 5 models with airflow from 130 to 1020 m³/h
- FLAT VERTICAL: 2 models with airflow 130 and 300 m³/h

ENERGETIC CLASS (with EVO-PH):

- FLAT-H and FLAT-V: **A**



RC-TOP *

High-Efficiency Heat Recovery Ventilation (HRV) Unit
- Plug 'n' Play version (electrical panel and controls pre-wired on the unit)

UNIT ENCLOSURE

- Self-supporting structure with polyurethane panels; unit interior and exterior in Zinc-Magnesium

CONFIGURATION AND INSTALLATION

- Vertical: floor-mounted or wall-mounted
- **Mirrored version available on request**

HEAT EXCHANGER

- Counterflow, high-efficiency, aluminum
- Automatic full bypass
- **Enthalpy heat exchanger available on request**

RANGE

- 2 models with airflow 150 and 250 m³/h

ENERGETIC CLASS (with EVO-PH):

- RC-TOP: **A**



MICRO-REV *

High-Efficiency Heat Recovery Ventilation (HRV) Unit
- Plug 'n' Play version (electrical panel and controls pre-wired on the unit)

UNIT ENCLOSURE

- Self-supporting structure with polyurethane panels; grey plastic-coated exterior, Zinc-Magnesium interior

CONFIGURATION AND INSTALLATION

- Vertical: wall-mounted
- **Mirrored version available on request**

HEAT EXCHANGER

- Counterflow, high-efficiency, aluminum
- Automatic full bypass
- **Enthalpy heat exchanger available on request**

RANGE

- 1 model with airflow 230 m³/h

ENERGETIC CLASS (with EVO-PH):

- MICRO-REV: **A**



*



Aluminum counterflow heat exchanger manufactured by RECUTECH

REVERSUS*

High-Efficiency Heat Recovery Ventilation (HRV) Unit
- Plug 'n' Play version (electrical panel and controls pre-wired on the unit)

UNIT ENCLOSURE

- Self-supporting structure with polyurethane panels; grey plastic-coated exterior;
- 100% recyclable PPE interior for size 1 and 2;
- Zinc-Magnesium interior for size 3

CONFIGURATION AND INSTALLATION

- Vertical: wall-mounted
- Configurable on site: quick air duct switching (supply and/or return)olo taglie 1 e 2
- **Mirrored version available on request (size 3 only)**



Aluminum counterflow heat exchanger manufactured by RECUTECH

HEAT EXCHANGER

- Counterflow, high-efficiency, in PP for sizes 1 and 2
- Counterflow, high-efficiency, in aluminum for size 3
- Automatic full bypass*
- **Enthalpy heat exchanger available on request**

RANGE

- 3 models with airflow 330, 460 and 600 m³/h

ENERGETIC CLASS (with EVO-PH):

REVERSUS: **A**



UVD*

High-Efficiency Heat Recovery Ventilation (HRV) Unit
- Plug 'n' Play version (electrical panel and controls pre-wired on the unit)

UNIT ENCLOSURE

- Self-supporting structure with polyurethane panels; external and internal surfaces in Zinc-Magnesium

CONFIGURATION AND INSTALLATION

- Vertical: wall-mounted
- **Mirrored version available on request**

HEAT EXCHANGER

- Counterflow, high-efficiency, in aluminum
- Automatic full bypass
- **Enthalpy heat exchanger available on request**



Aluminum counterflow heat exchanger manufactured by RECUTECH

RANGE

- 2 models:
- Residential size 1: air flow 690 m³/h
- Commercial size 2: air flow 1400 m³/h

ENERGETIC CLASS (with EVO-PH):

UVD 1: **A**



JD*

High-efficiency heat recovery module for centralized systems
-Passive heat recovery unit (heat exchanger and filters, without fans)

UNIT ENCLOSURE

- Self-supporting structure with internal insulation; exterior and interior in Zinc-Magnesium
- Double condensate drain

CONFIGURATION AND INSTALLATION

- Horizontal: false ceiling

2 centralized fan units serving the building (condominium or multi-family houses) or the riser, paired with JD passive heat recovery units (heat exchanger and filters), one per apartment.



Aluminum counterflow heat exchanger manufactured by RECUTECH

HEAT EXCHANGER

- JD 1 and 2 : Counterflow, high efficiency, made of PP
- JD 3 and 4 : Counterflow, high efficiency, made of Al
- **Enthalpy heat exchanger available on request for sizes 1 and 2**

RANGE

- 4 models with airflow from 100 to 800 m³/h



AURA PRO

High-efficiency heat recovery unit for DECENTRALIZED MVHR (for a single room)

STRUCTURE (High resistance, antistatic, UV-resistant)

- Telescopic tube in PVC or insulated
- High-efficiency regenerative heat exchanger
- DC brushless fan, low consumption
- Internal grille with design and filter
- Foldable or aesthetic external grille
- Remote control

AVAILABLE OPTIONS

- Ready for large-scale construction sites
- Corner installation kit

RANGE

- Two sizes are available: AURA PRO 1 with a nominal airflow of MAX 24 m³/h, and AURA PRO 2 with a nominal airflow of MAX 50 m³/h.

CLASSE ENERGETICA: **A**



HEAT RECOVERY VENTILATION UNIT for the TERTIARY and INDUSTRIAL sector (UVNR)

Compliant with EU Regulation No. 1253/2014 (EcoDesign)

UTA*

High-efficiency air handling unit with heat recovery
Plug n' play version (pre-wired electrical panel and controls on board)

UNIT ENCLOSURE

- Double-panel casing, interior and exterior in Zinc-Magnesium
- Frame in extruded aluminum profiles

CONFIGURATION AND INSTALLATION

- Horizontal: floor-mounted
- Mirrored version available on request

HEAT EXCHANGER

- High-efficiency counterflow, aluminum
- Rotating heat exchanger available
- Automatic FULL bypass
- Enthalpy heat exchanger available on request

RANGE

- 5 models with airflow from 8.000 to 24.000 m³/h



CRHE*

High-efficiency air handling unit with heat recovery
Plug n' play version (pre-wired electrical panel and controls on board)

UNIT ENCLOSURE

- Double-panel casing, interior and exterior in Zinc-Magnesium
- Frame in extruded aluminum profiles

CONFIGURATION AND INSTALLATION

- CRHE-H: horizontal, floor or ceiling mounted
- CRHE-V: vertical, floor mounted
- CRHE-TOP: vertical, floor mounted
- Mirrored version available on request

H = horizontal arrangement; V = vertical arrangement

HEAT EXCHANGER

- High-efficiency counterflow, aluminum
- Automatic FULL bypass
- Enthalpy heat exchanger available on request

RANGE

- CRHE-H: 5 models, airflow from 700 to 3.000 m³/h
- CRHE-V: 7 models, airflow from 700 to 5.300 m³/h
- CRHE-TOP: 6 models, airflow from 700 to 5.000 m³/h



UVR & UVR-TOP*

High-efficiency air handling unit with heat recovery
Plug n' play version (pre-wired electrical panel and controls on board)

UNIT ENCLOSURE

- Double-panel casing, interior and exterior in Zinc-Magnesium
- Frame in extruded aluminum profiles
- Without thermal break (T3-TB3) or with thermal break (T2-TB2)
- Supplied as a single piece or (optional) in 3 parts (from size 3 onwards)

CONFIGURATION AND INSTALLATION

- UVR: horizontal, floor mounted
- UVR-TOP: vertical, floor mounted
- **Mirrored version available on request**

*



Heat exchanger, KLINGENBURG



HEAT EXCHANGER

- High-efficiency enthalpy rotary heat exchanger in aluminum
- **Absorption enthalpy heat exchanger available**

RANGE

- 6 models with airflow from 600 to 7.000 m³/h

GAVIA*

High-efficiency air handling unit with heat recovery
Plug n' play version (pre-wired electrical panel and controls on board)

UNIT ENCLOSURE

- Double-panel casing, interior and exterior in Zinc-Magnesium
- Frame in extruded aluminum profiles

CONFIGURATION AND INSTALLATION

- Vertical: floor mounted
- **Mirrored version available on request**

DUO-ED & DUO-EC*

Medium-efficiency air handling unit with heat recovery
Plug n' play version (pre-wired electrical panel and controls on board)

UNIT ENCLOSURE

- Double-panel casing, exterior and interior in Zinc-Magnesium
- Frame in extruded aluminum profiles

CONFIGURATION AND INSTALLATION

- Horizontal: ceiling-mounted
- Vertical: floor mounted
- **Mirrored version available on request**

HEAT EXCHANGER

- High-efficiency counterflow, aluminum
- Automatic free-cooling bypass

HEAT EXCHANGER

- High-efficiency counterflow, aluminum
- Automatic free-cooling bypass

RANGE

- **GAVIA**: 7 models with airflow from 300 to 6.000 m³/h

FANS

- **DUO-ED**: AC centrifugal fans with 3 speeds
- **DUO-EC**: High-efficiency EC fans

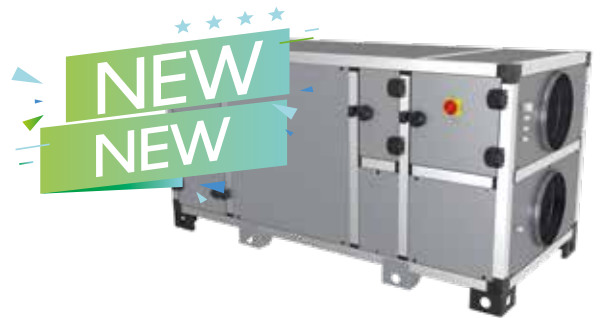
RANGE

- **DUO-ED**: 6 models, airflow from 300 to 4.000 m³/h
- **DUO-EC**: 6 models, airflow from 300 to 6.000 m³/h

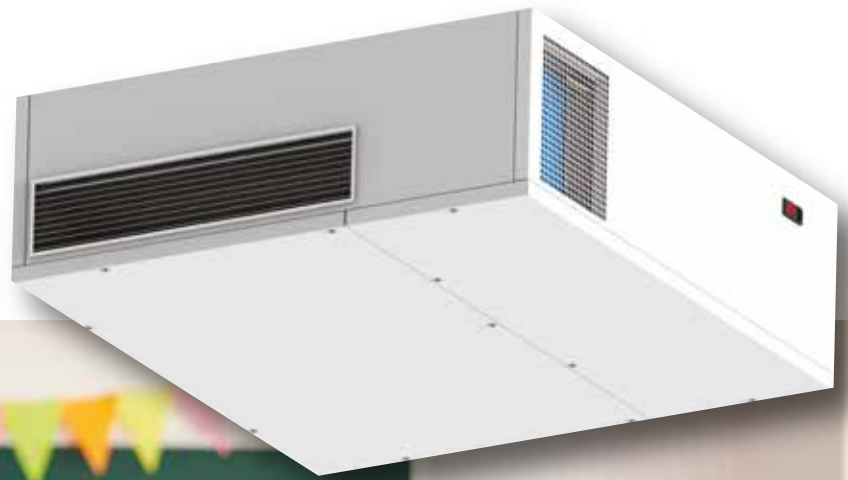
*



Counterflow aluminum heat exchanger manufactured by RECUTECH



MVHR unit for schools UHS

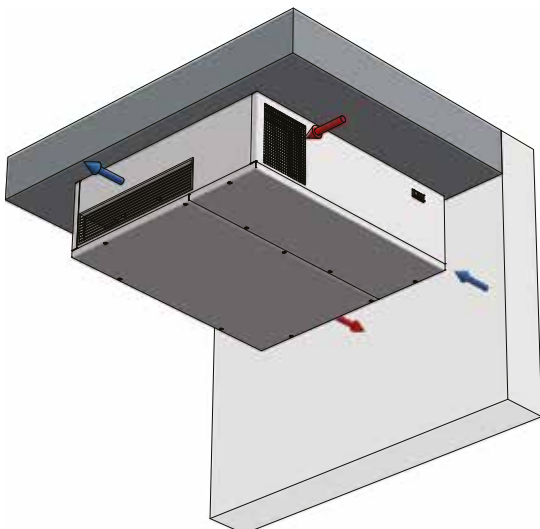


Two models available with nominal airflows of 400 and 800 m³/h

Air quality in schools is essential. The presence of pollutants in indoor environments (particulate matter, dust, pollen, VOCs, CO₂) and microorganisms (bacteria or viruses) is a primary cause of student absences. During the COVID-19 pandemic, the guidelines from the Italian National Institute of Health highlighted the need to renew indoor air through frequent window opening. This often forced students to wear heavy clothing or blankets to cope with lower classroom temperatures during winter. In addition, energy consumption for heating classrooms increased significantly—up to 40% more than the previous winter.

What's the solution? Should windows remain open for air renewal or closed to save energy? The answer is MVHR (Mechanical Ventilation with Heat Recovery). This system continuously replaces indoor air by introducing fresh outdoor air, which is filtered to remove pollutants and preheated before entering the room. Preheating occurs via a high-efficiency heat exchanger, which transfers the heat from the extracted stale air to the incoming fresh air. This ensures classrooms remain both clean and comfortably warm.

CLAUTEK offers the UHS unit for school classrooms, the result of years of expertise in air purification systems.





HRU-ED, HRU-EC & HRU-EX

Air-to-air conditioning unit with heat recovery
Plug n' play version (pre-wired electrical panel and controls on board)

UNIT ENCLOSURE

- Double-panel casing, interior and exterior in Zinc-Magnesium
- Frame in extruded aluminum profiles

CONFIGURATION AND INSTALLATION

- Horizontal: ceiling or floor mounted
- **Mirrored version available on request**

HEAT EXCHANGER

- Crossflow aluminum heat exchanger, passive recovery

HRU-ED VERSION

- ON-OFF compressor, AC fans

HRU-EX VERSION

- ON-OFF Compressor, EC fans

HRU-EC VERSION

- INVERTER compressor, EC fans

RANGE

- 5 models with airflow from 500 to 5.000 m³/h
- Power range (active + passive recovery) from 5 to 50 kW
- Rotary or scroll compressor, R410A refrigerant



Counterflow aluminum heat exchanger manufactured by RECUPERATOR

Compliant with EU Regulations No. 1253/2014 (EcoDesign) and 1254/2014 (energy labeling)
Heat recovery units listed by the CasaClima Agency among approved ventilation devices

DEH

High-efficiency air dehumidification and renewal unit with heat recovery
Plug n' play version (pre-wired electrical panel and controls on board)

UNIT ENCLOSURE

- Self-supporting structure in Zinc-Magnesium; exterior and interior

CONFIGURATION AND INSTALLATION

- Horizontal: ceiling-mounted
- Vertical: wall-mounted
- **Mirrored version available on request**

HEAT EXCHANGER

- High-efficiency counterflow, made of PP
- **Enthalpy heat exchanger available on request**

VERSIONS

- With refrigeration unit, R134a gas
- With hydronic coil

RANGE

- DEH 1 airflow 150 (VMC) - 300 m³/h Dehumidifies
- DEH 2 airflow 250 (VMC) - 500 m³/h Dehumidifies

ENERGETIC CLASS **B**



ZEFIRO

High-efficiency air dehumidification and renewal unit with heat recovery
Plug n' play version (pre-wired electrical panel and controls on board)

UNIT ENCLOSURE

- Self-supporting structure in Zinc-Magnesium; exterior and interior

CONFIGURATION AND INSTALLATION

- Horizontal: ceiling-mounted
- Vertical: wall-mounted
- **Mirrored version available on request**

HEAT EXCHANGER

- High-efficiency counterflow, made of PP
- **Enthalpy heat exchanger available on request**

VERSIONS

- With refrigeration unit, R290 gas

RANGE

- ZEFIRO 1 airflow 200 (VMC) - 300 m³/h Dehumidifies
- ZEFIRO 2 airflow 300 (VMC) - 500 m³/h Dehumidifies

ENERGETIC CLASS

- ZEFIRO 1 **A**
- ZEFIRO 2 **A+**





FILTRATION PLENUM



CAFIL

Filter plenum for duct installation (pre-filter or enhanced filtration)

UNIT ENCLOSURE

- Casing in Zinc-Magnesium sheet metal
- Circular connectors with gasket

RANGE

- 10 models with diam. from 200 to 710 mm

FILTERS - Classification according to ISO 16890

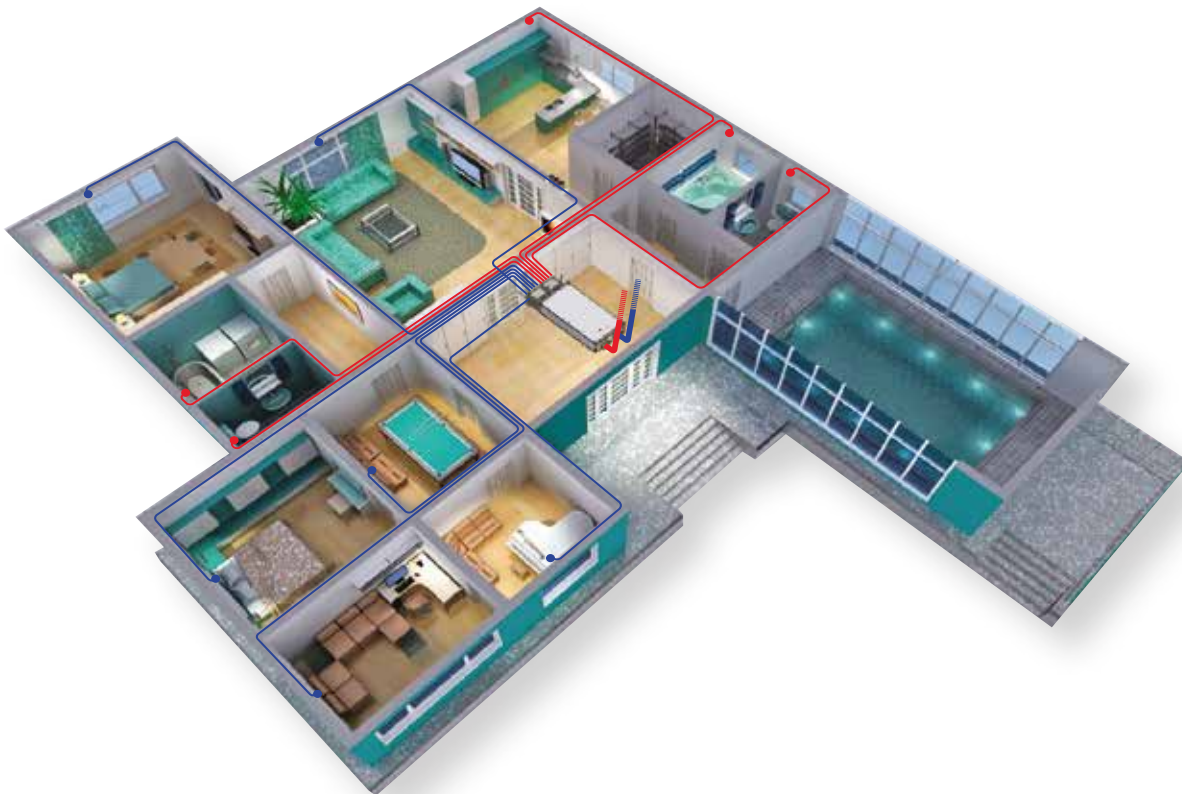
- Coarse 65% (formerly G4), pleated synthetic fiber
- ePM1 70% (formerly F7), low pressure drop
- ePM1 85% (formerly F9), low pressure drop



DISTRIBUTION SYSTEM

The AIR+ air distribution system is a complete range of accessories—designed for quick and easy on-site installation, either in suspended ceilings or concealed installations—for distributing air to individual rooms in new or renovated buildings.

Available components include circular and oval ducts, supply and return plenums, silencers, various fittings, diaphragms, terminals for valves, room plenums for grilles and ventilation valves, and more. All products are made from antibacterial and antifungal materials.



To complete the offering—for residential and tertiary sectors—there is a wide range of dampers (balancing, sealing, overpressure), silencers, return air grilles, filter boxes, airflow regulators, and special configurations.



indoor air quality
and energy saving

Controls: air quality and energy

The units are supplied complete with a control system and connection to the electrical supply network; multiple control versions are available. For more information, see the control manual.

CTRS



CTR-08



EVO-PH



Unit Selection

For clients and designers, the web-based software www.AirFactory.it is available to select and configure units: user-friendly, guided navigation, and full-color 3D graphics.

Starting from project data, the configurator allows you to choose the unit (the system suggests alternatives), set temperature and relative humidity, adjust airflow balances, add post-treatment, select controls and accessories, and more.

The summary provides a complete overview of all unit features and options, including energy consumption, efficiency, and noise level at the operating point. Detailed technical specifications are available, and selections can be saved, modified, and printed.





Made in Italy