

TECHNICAL DATA



UNIT	ENERGETIC CLASS
BREVA MICRO-FLAT EC	A



BREVA MICRO-FLAT





BREVA MICRO-FLAT

High efficiency heat recovery ventilation unit with double flow for residential buildings.

PERFORMANCES

It is equipped with a PP counterflow heat exchanger. Backward blade fans, electronically controlled, allow a maximum flow of 115 m³/h at 100 Pa with an electricity consumption of only 45 W.

STRUCTURE

The BREVA MICRO-FLAT is made with a self-supporting structure in PPE, material that ensures a high degree of thermal insulation towards the outside and between the air flows. Access to the filters Coarse 65% (G4) is particularly easy thanks to two special openings located on the inspection panel. The standard supply is Coarse 65% for supply air and Coarse 65% for exhaust air; the ePM1 55% (F7) filter is available for after-sales replacement (optional)

The BREVA MICRO-FLAT is designed to be installed on the ceiling or on the floor inside buildings with an ambient temperature between 0 ° C and 45 ° C.

CONFIGURATIONS - CEILING INSTALLATION



CONFIGURATIONS - FLOOR INSTALLATION

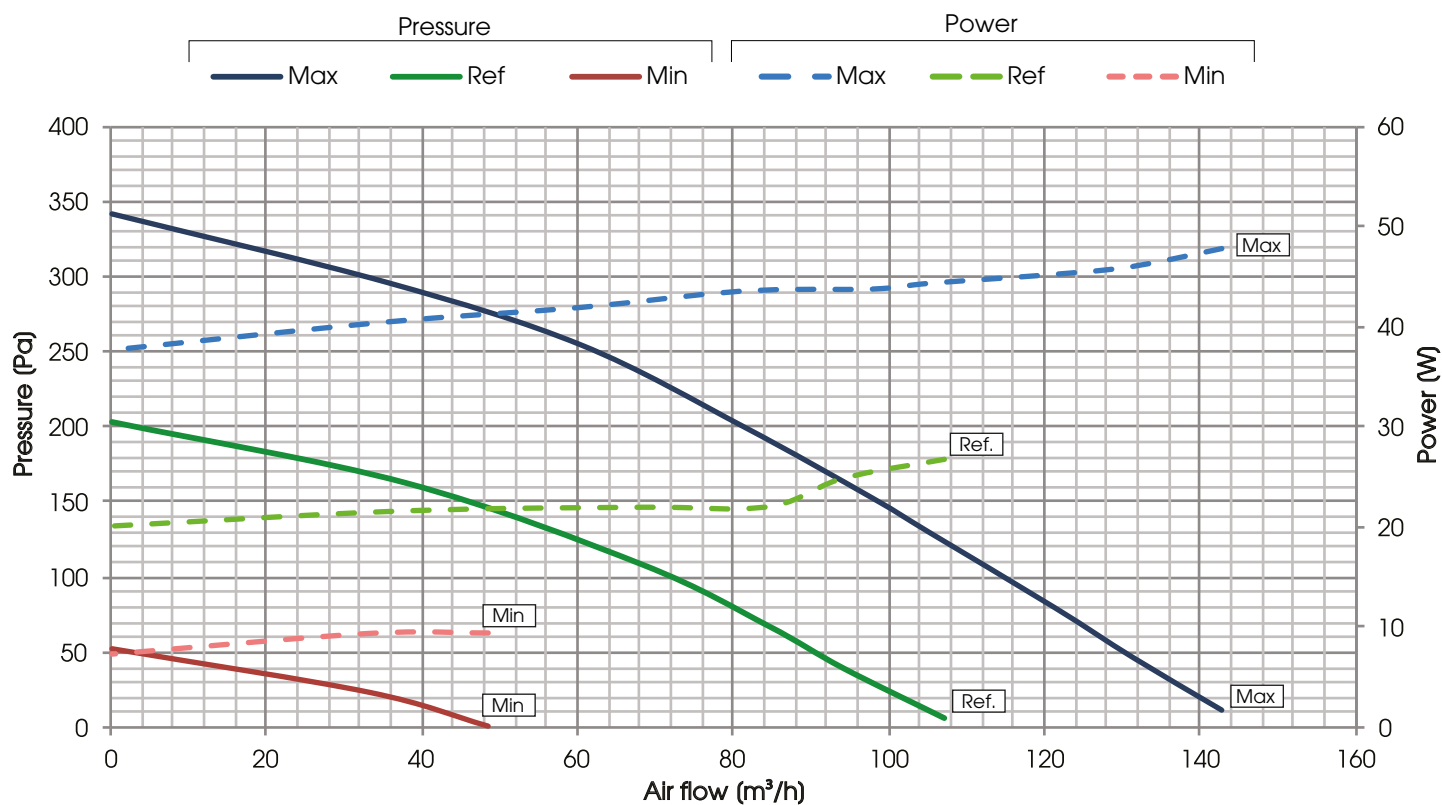




PERFORMANCES (UNI EN 13141-7)

The unit must be ducted properly: UTEK authorizes the use only according to its performance diagram shown into this catalogue
The declared performances are with CLEAN filters, and guaranteed ONLY with the original filters UTEK low pressure drop.

BREVA MICRO-FLAT

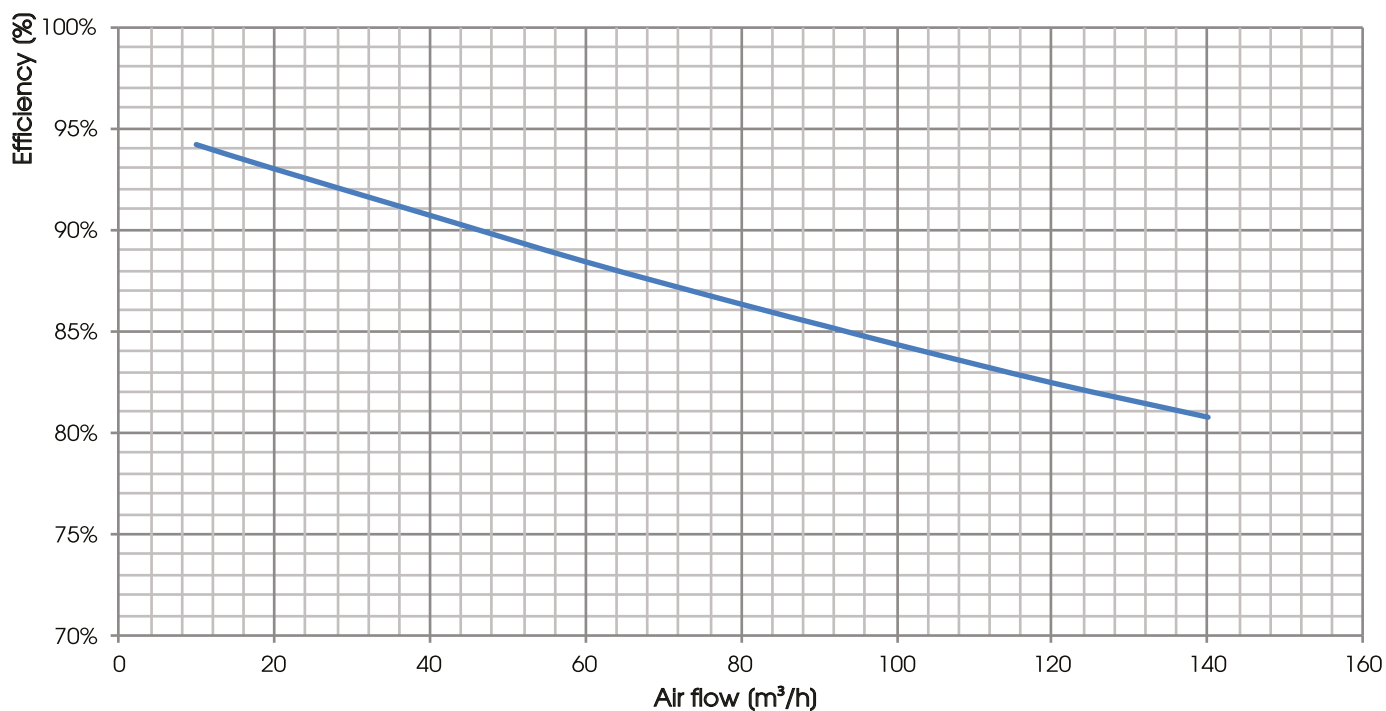


HEAT RECOVERY PERFORMANCE (sensible efficiency)

Values referred to the following conditions (UNI EN 13141-7): T_{bs} external air 7°C; U.R. external 72%; T_{bs} environment 20°C; U.R. environment 38%

BREVA MICRO-FLAT

Efficiency





TEST LEAKAGE BREVA MICRO-FLAT EC according UNI EN 13141-7

LEAKAGE	TEST CONDITIONS	CLASS
OUTDOOR	Positive pression 250 Pa	A2
OUTDOOR	Negative pression 250 Pa	A2
INDOOR	Pressure difference 100 Pa	A3

NOISE LEVEL

Lw Sound power level taken in accordance to UNI EN ISO 3741 CLASS 1

	NOISE FROM THE CASE (dB)								
Unit BREVA MICRO-FLAT EC	125 Hz	250 Hz	500 Hz	1000 Hz	2000 Hz	4000 Hz	8000 Hz	L _w dB(A)	
100%	44,7	46,9	53,1	53,3	47,4	43,4	31,2	56,0	
REF	41,2	44,9	45,9	47,9	42,9	37,9	25,2	50,6	

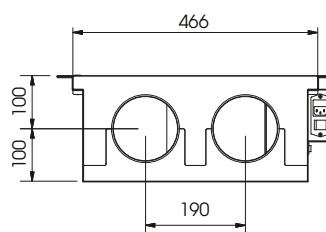
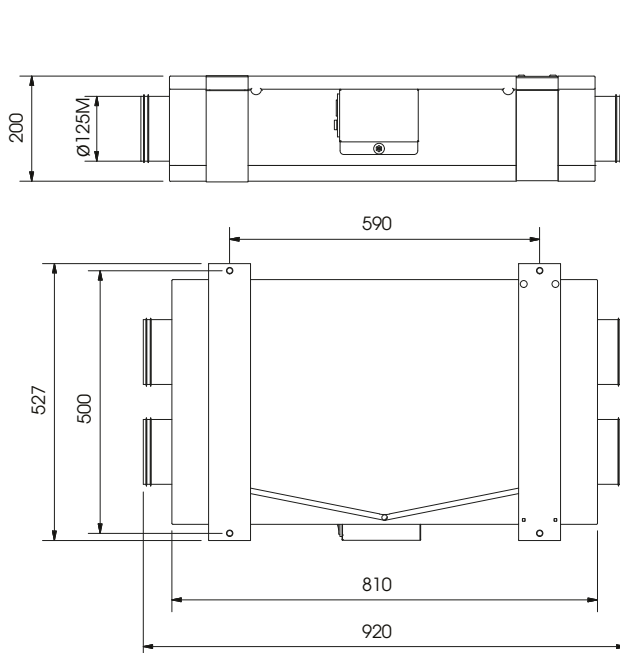
	NOISE IN THE DUCTS (dB)							
Unit BREVA MICRO-FLAT EC	125 Hz	250 Hz	500 Hz	1000 Hz	2000 Hz	4000 Hz	8000 Hz	L _w dB(A)
100%	46,7	51,9	58,2	57,2	52,7	49,1	36,7	60,7
REF	42,6	52,2	50,7	50,8	47,5	42,6	28,8	54,7

ELECTRICAL DATA

UNIT	FAN				UNIT BREVA MICRO-FLAT	
	Power (W)	Supply	Current max (A)	Insulation class	Supply	Current max (A)
BREVA MICRO-FLAT	2 X 27	230 V, 50/60 Hz 1F	2 X 0,27	IP 54 class B	230 V, 50 Hz 1F	0,6

(*) Fan data, it's referred to the global absorbed power graph of the machine in the working point

BREVA MICRO-FLAT DIMENSIONS (mm) WEIGHT (kg)

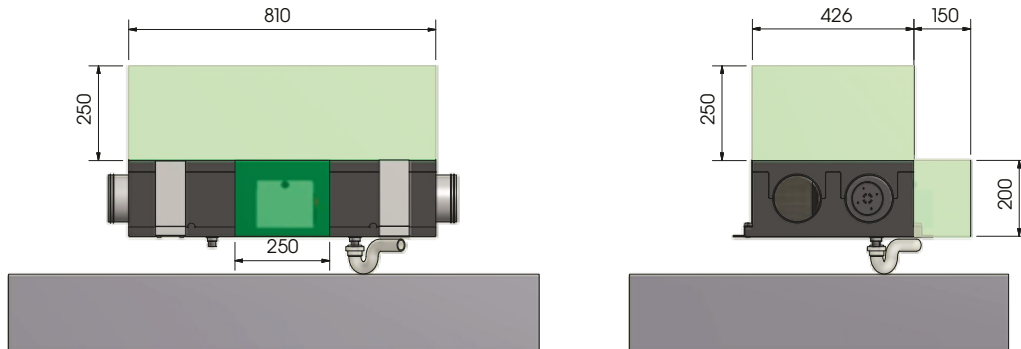


Weight BREVA MICRO-FLAT = 9 kg



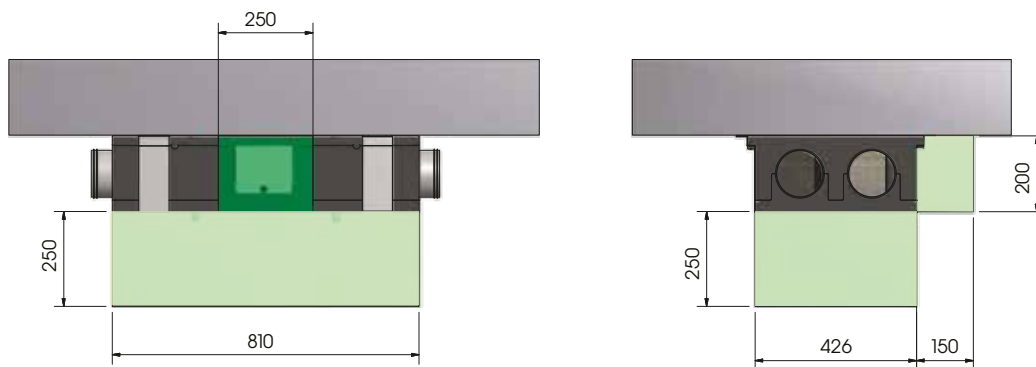
MICRO-FLAT INSTALLATION FLOOR INSTALLATION

■ Minimum required space for maintenance (mm)

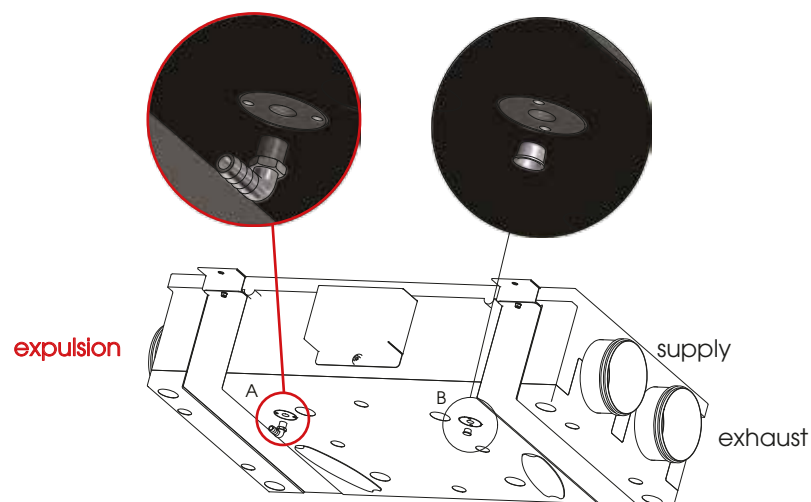


CEILING INSTALLATION

■ Minimum required space for maintenance (mm)



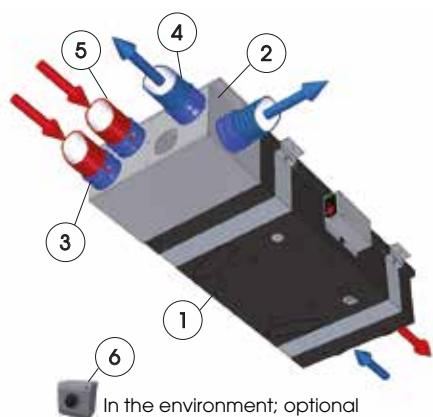
CONDENSATE DISCHARGE ASSEMBLY (90 ° bend hose connection supplied)



The condensate drain must be mounted near the EXPULSION; N.B. - provide a siphon on the condensate drain circuit



Installation example



Ref.	Code	Description
1	3MB0 0021 GNSH	BREVA MICRO FLAT SH
2	CADP LXAI R015	Plenum for MICRO FLAT, 4 + 4 attacks, isolated
3	CADC ONAC C002	Linear connection from PLENUM to Circular duct + gasket - D. 75/63 mm (1 pc)
4	CADC ONAC C009	CIRCULAR semirigid CONDUIT D. 75 / 63mm - BLUE (50 mt)
5	CADC ONAC C011	CIRCULAR semirigid CONDUIT D. 75/63mm - RED (50 mt)
6	0G00 0000 0019	SPEED REGULATOR (CVR)



A	Manufacturer's name C.L.A. S.r.l	
B	Manufacturer's model identifier	BREVA MICRO FLAT EVO-LIGHT
C	Specific energy consumption (SEC) (kWh/m².a)	COLD -72,6
		TEMPERATE -35,6
		WARM -11,8
	SEC class	
D	Declared typology	UVR - UVB
E	Type of drive installed	Variable speed
F	Type of heat recovery system	Recovery
G	Thermal efficiency of heat recovery (%)	85,2
H	Maximum flow rate (m³/s)	0,032
I	Electrical power input at maximum flow rate (W)	45
I	Sound power level (Lwa) (dB)	51
K	Reference flow rate (m³/s)	0,025
L	Reference pressure difference (Pa)	50
M	SPI (W/m³/h)	0,264
N	Control factor CLTR	1
	Control typology	Manual Control
O	Declared maximum internal / external leakage rates (%)	8,8 / 6,6
P	Mixing rate of non-ducted bidirectional ventilation units (%)	-
Q	Position and description of visual filter warning for RVUs intended for use with filters, including text pointing out the importance of regular filter changes for performance and energy efficiency of the unit	The filter alarm is signaled on the Control System display: the intermittent "Dirty Filters" message will appear. "To maintain the energy efficiency of the UVR, it is recommended to replace the filters when reported." The writing is positioned near the filter inspection.
R	For unidirectional ventilation systems, instructions to install regulated supply/exhaust grilles in the façade for natural air supply/extraction	
S	Internet address for pre-/dis-assembly instructions	www.utek-air.it
T	For non-ducted units only: the airflow sensitivity to pressure variations at + 20 Pa and - 20 Pa	
U	For non-ducted units only: the indoor/outdoor air tightness	
V	The annual electricity consumption (AEC) (kWh/a)	380
W	The annual heating saved (AHS) for each type of climate (kWh/a)	2000 (WARM)
		8660 (COLD)
		4430 (TEMPERATE)

Dear Customer

Thanks for your attention to the product UTEK , designed and manufactured to ensure the real values to the User: Quality, Safety and Savings on working.



Made in Italy

**AZIENDA CON SISTEMA
DI GESTIONE QUALITÀ
CERTIFICATO DA DNV GL**
ISO 9001

**AZIENDA CON
SISTEMA DI GESTIONE
AMBIENTALE CERTIFICATO
DA DNV**
ISO 14001



the Dealer

BREVA MICRO-FLAT_2020_1_EN



HEAT RECOVERY VENTILATION UNITS for RESIDENTIAL BUILDINGS